



Alexandra Gardens, London, W4 2RZ

Asking Price £375,000

WHITMAN & CO.

SALES · LETTINGS · COMMERCIAL

- Two double bedrooms
- Newly fitted kitchen
- Leasehold
- Off-street parking
- Close proximity to river
- Excellent transport links

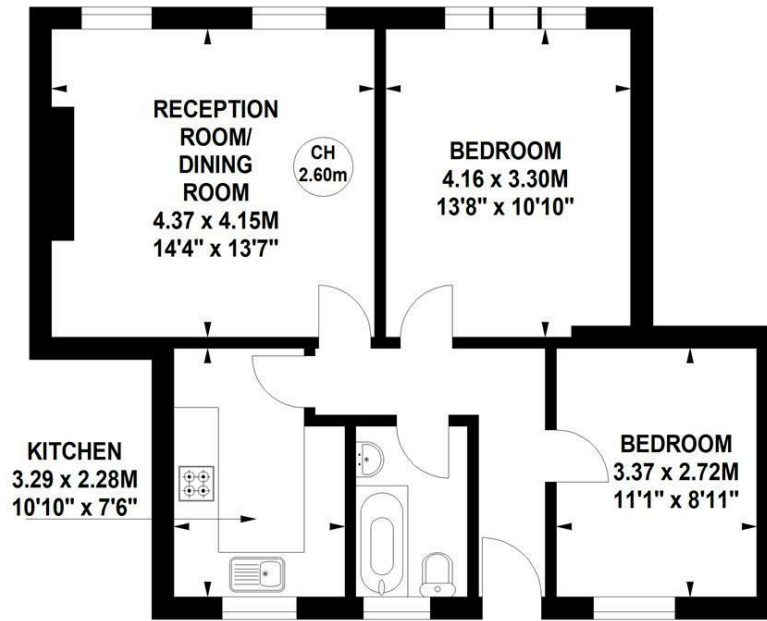
Tenure - Leasehold
 Lease length - 176 Years remaining
 Ground rent - £10 pa
 Maintenance costs - £800 pa
 Local authority - Hounslow
 Council tax - Band D

Alexandra Gardens, W4

Approximate gross internal area

69.55 sq m / 641 sq ft

Key :
 CH - Ceiling Height



Second Floor

Not to scale, for guidance only and must not be relied upon as a statement of fact.
 All measurements and areas are approximate only

THE PROPERTY

A well presented two-bedroom flat ideally located opposite Dukes Meadows open grounds and within a short walk to Chiswick and Cavendish Schools, the beautiful Chiswick House and Grounds and the Thames. The property comprises a newly fitted kitchen, two well-furnished double bedrooms, bathroom, communal gardens including children's play area and off-street parking. Transport links include Chiswick mainline station, bus routes and the A4/M4 into and out of London.

SITUATION



5-7 Turnham Green Terrace, Chiswick, London, W4 1RG

Tel 020 8747 8800

E-mail sales@whitmanandco.com

Website www.whitmanandco.com